

High Impact Regional Strategies to Implement Smart Growth

An Interactive Implementation Workshop
New Partners for Smart Growth Conference Kansas City, MO
February 8, 2013

Moderators:

Laura Carstens , City of Dubuque, Iowa

Marisa Lang Ghani, Atlanta Regional Commission

Panel:

Dan Reuter, Atlanta Regional Commission

Bob Dean, Chicago Metropolitan Agency for Planning

Lawrence Ward, Southwestern Wisconsin Regional Planning Commission

Roy Buol, Mayor, City of Dubuque, Iowa

Question #1

Set the stage - Introduce your region and organization

ATLANTA



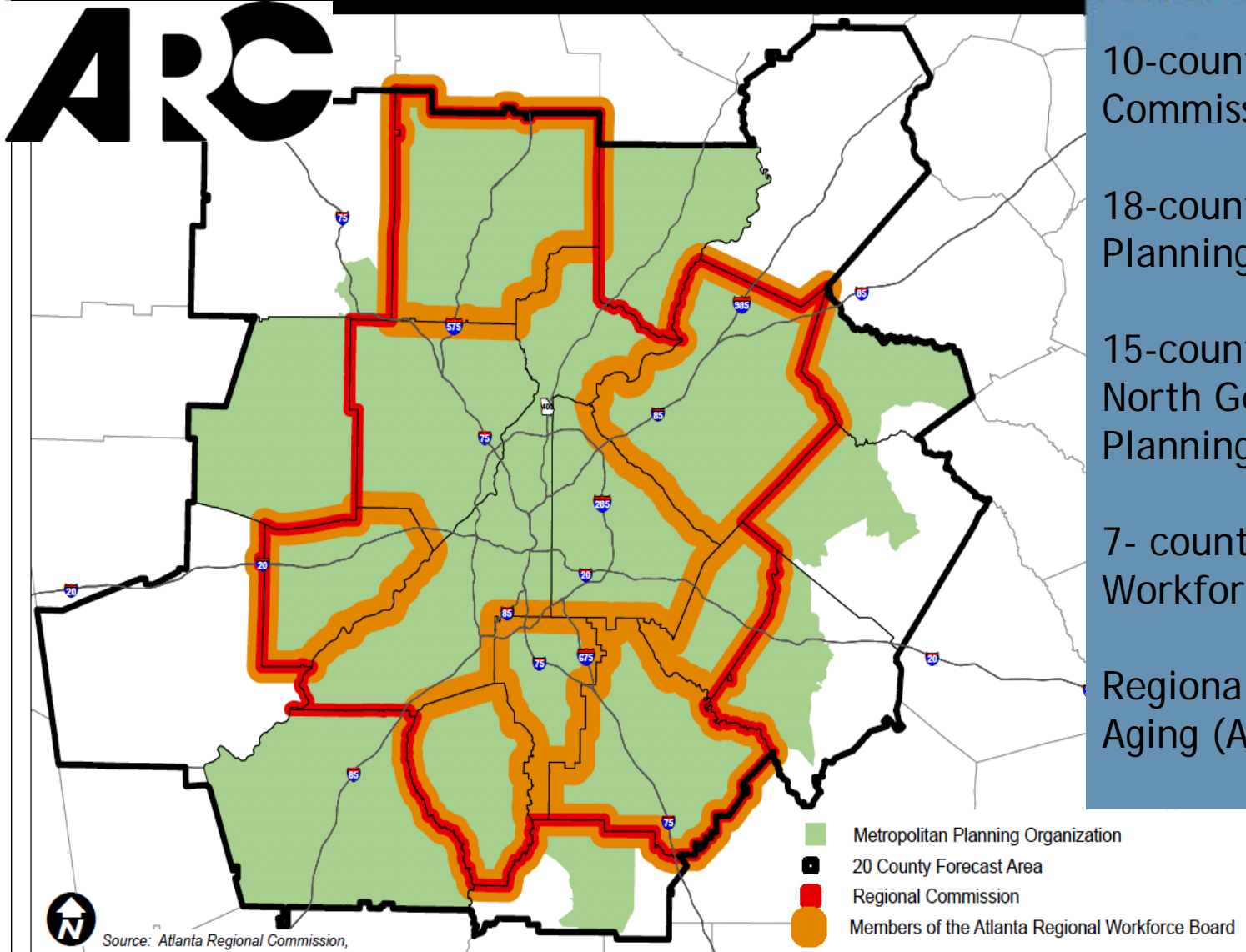
Dan Reuter, AICP
Manager, Community Development
Atlanta Regional Commission



Regional Description

Planning Areas of the Atlanta Regional Commission

ARC



Source: Atlanta Regional Commission,

- Metropolitan Planning Organization
- 20 County Forecast Area
- Regional Commission
- Members of the Atlanta Regional Workforce Board

ARC Background

10-county Regional Commission

18-county Metropolitan Planning Organization

15-county Metropolitan North Georgia Water Planning District

7-county Atlanta Regional Workforce Board (ARWB)

Regional Area Agency on Aging (AAA)

Regional Description

- 5.27 million regional pop.
- 3.6 in 10-county planning area
- 3rd largest urbanized area in the nation.

Figure 9: Population Growth (Atlanta Region and State of Georgia)

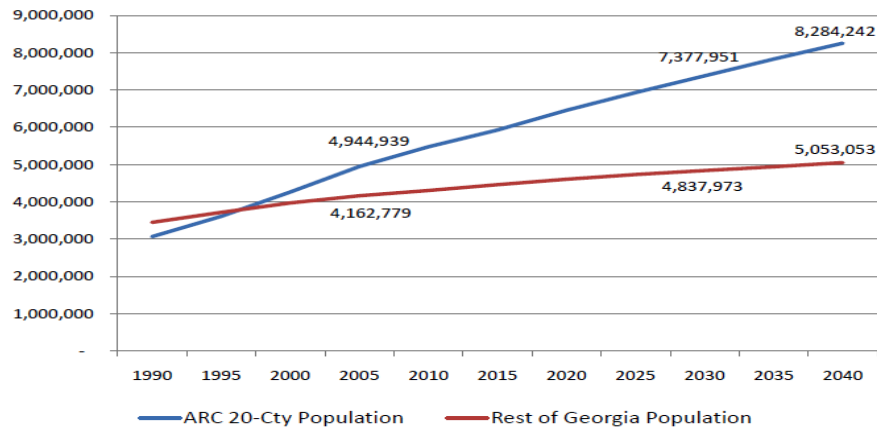
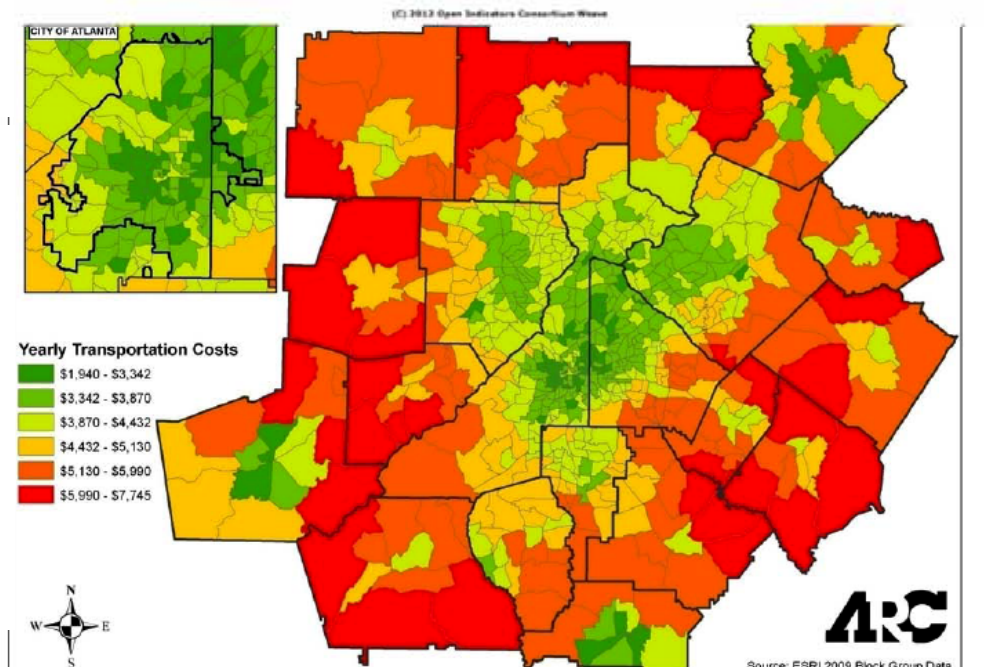
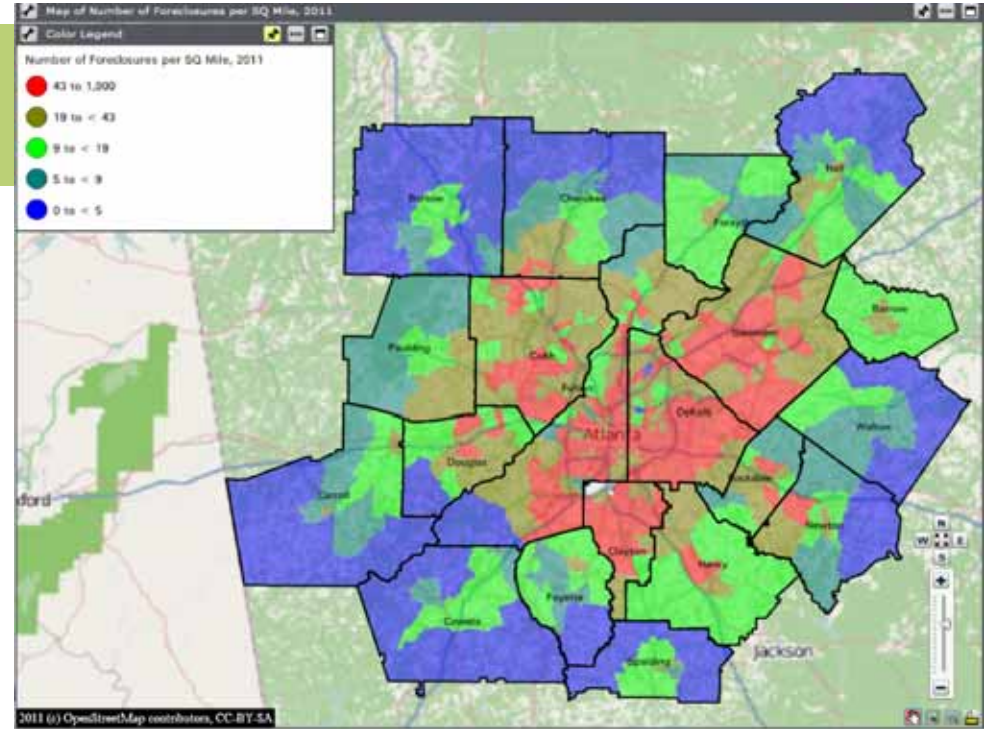
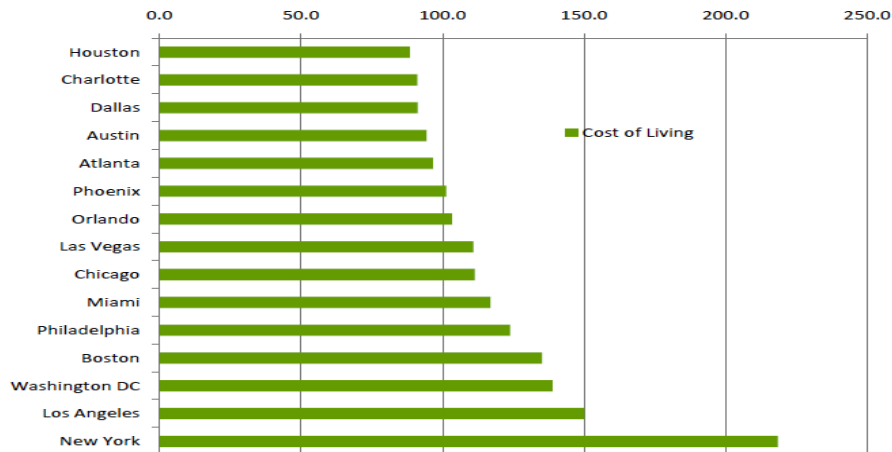


Figure 17: Cost of Living - Metro Comparisons



Source: FSRI 2009 Block Group Data



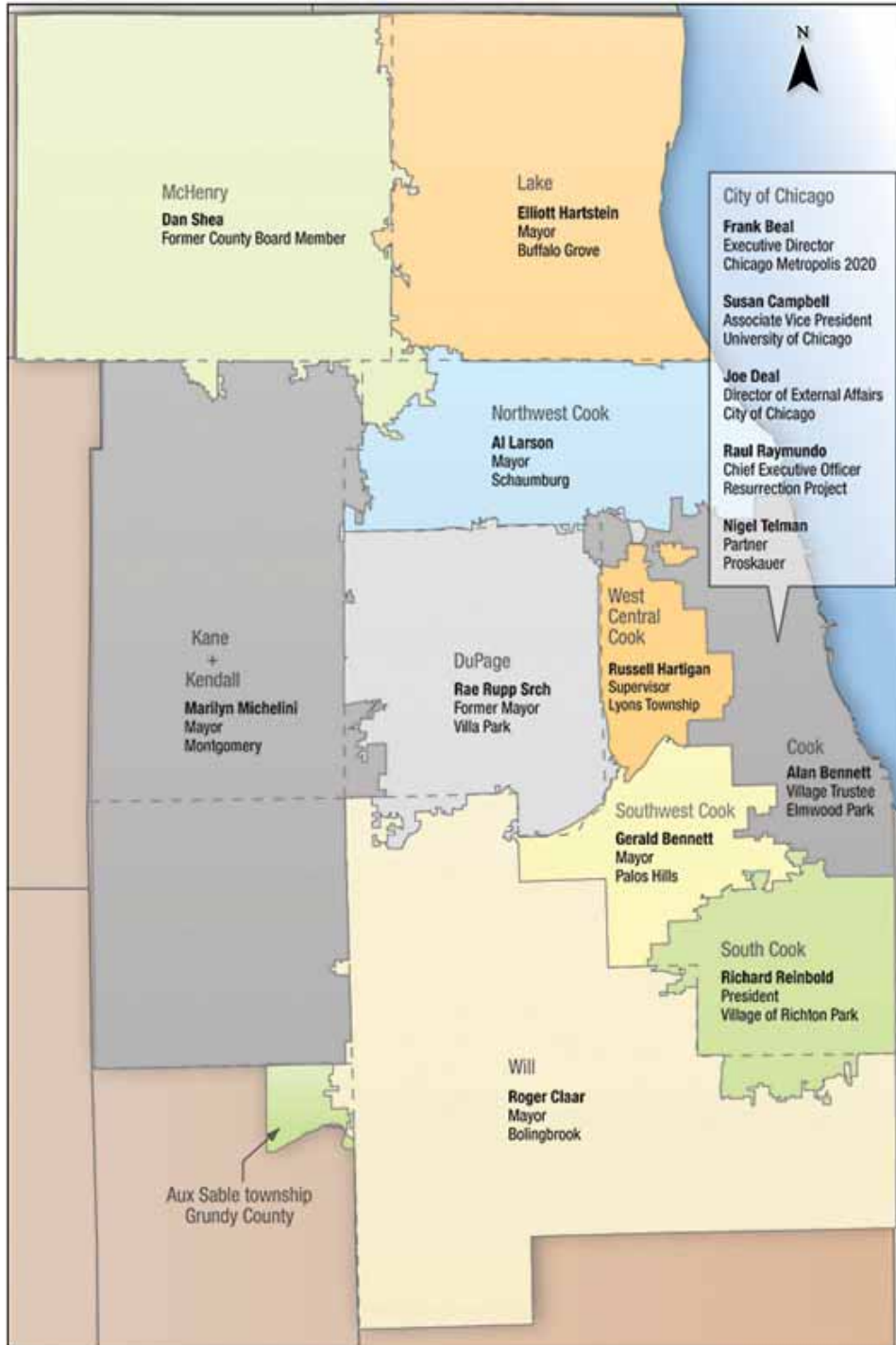
Bob Dean

Deputy Executive Director for Local
Planning
Chicago Metropolitan Agency for Planning



Chicago Metropolitan
Agency for Planning

Regional Description



CMAP Background

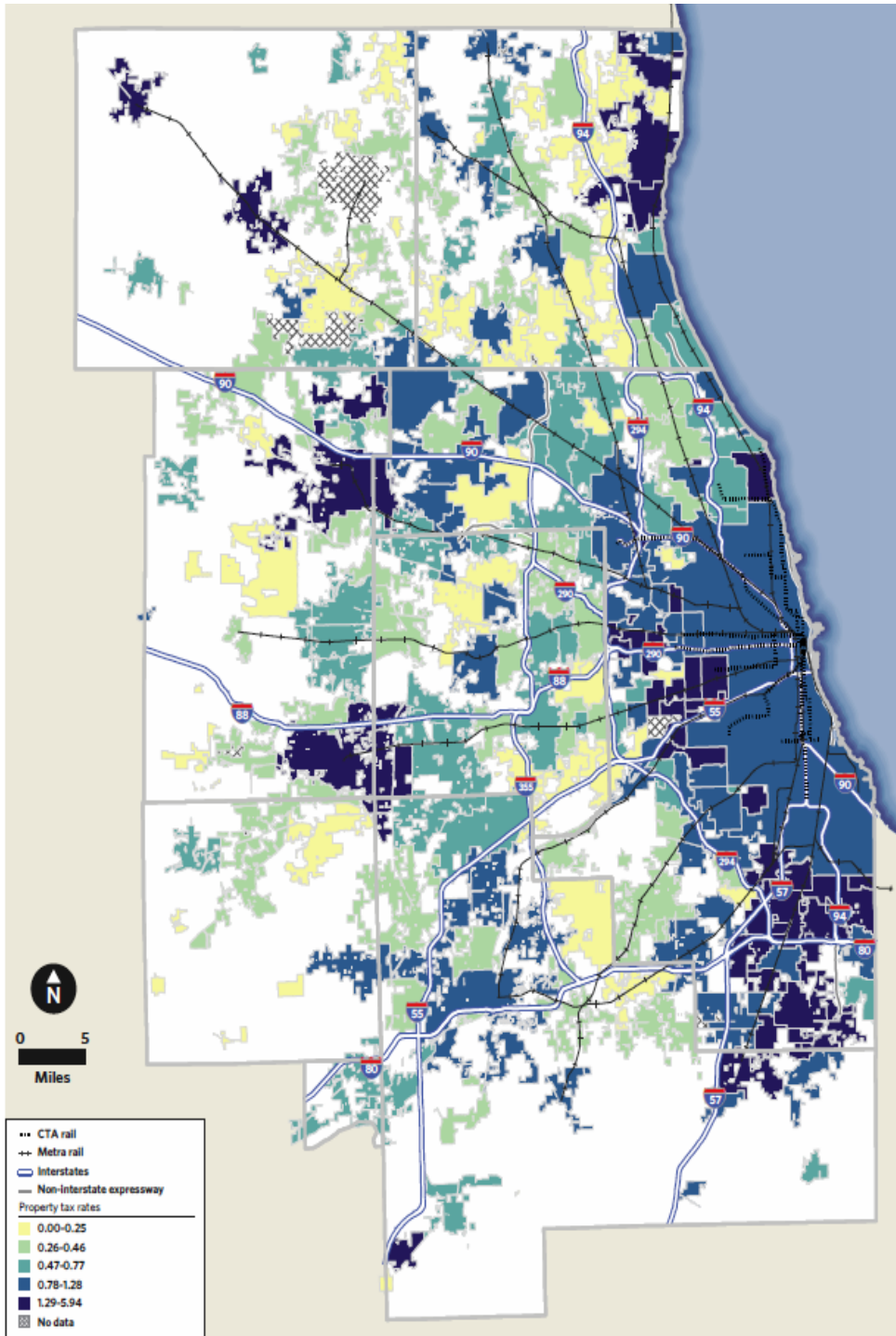
Formed by state law in 2005 to integrate planning for transportation and land use

Seven-county area, with geographically representative Board



Chicago Metropolitan
Agency for Planning

Regional Description



7 counties
284 municipalities
123 townships
307 school districts
136 fire districts
173 park districts
108 library districts
88 miscellaneous

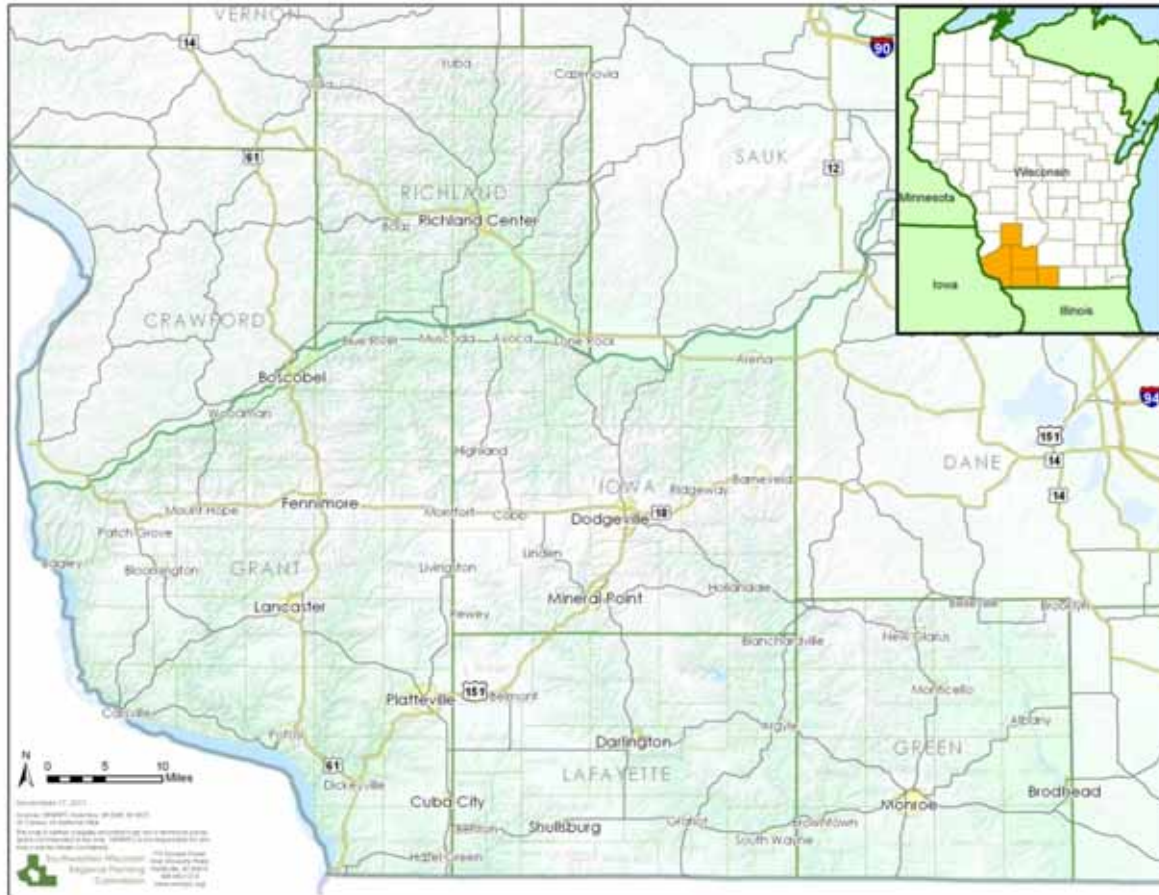
1,226 total



Larry Ward, AICP
Executive Director

Southwestern Wisconsin
Regional Planning
Commission (SWWRPC)

Regional Description



A Rural Corner of Wisconsin, with deeply carved river valleys and scenic vistas



- Population 150,000 people in 5 counties and 137 jurisdictions
- 15 percent are age 65 and older
- Primarily white (97%)
- Additionally, a large Amish population is present

Regional Description



Southwestern Wisconsin
Regional Planning
Commission

Land Use

Agricultural: 80%

Forests and other undeveloped uses: 16%.

Developed land: 4% (residential and public uses)

Commercial and manufacturing uses: 0.5%



Economy

Retail, manufacturing, government, and agriculture-related businesses are the top employers and make up over half of the region's roughly \$3.9 billion economy.

There are also four postsecondary institutions operating in the region: University of Wisconsin-Platteville (the fastest growing in the UW system), UW-Richland, Southwest Wisconsin Technical College, and part of Blackhawk Technical College

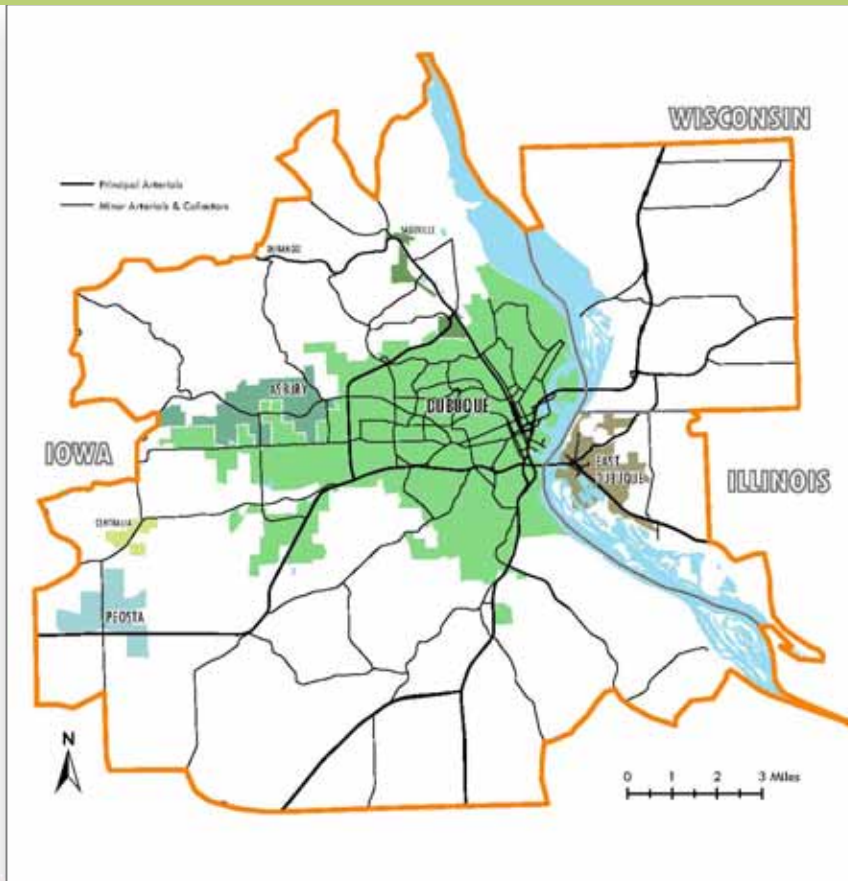


Roy D. Buol
Mayor
City of Dubuque, Iowa

Dubuque, Iowa Metro Region



Regional Description



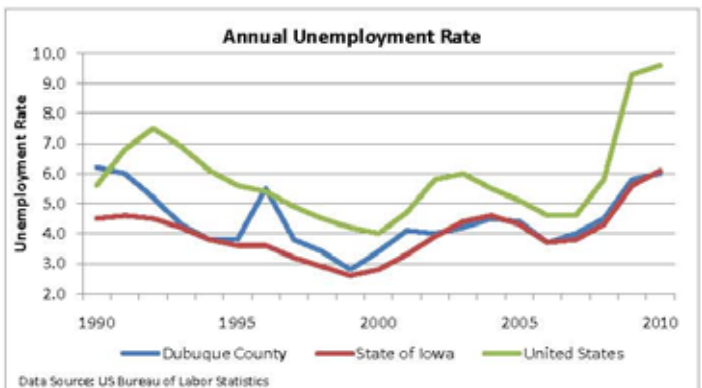
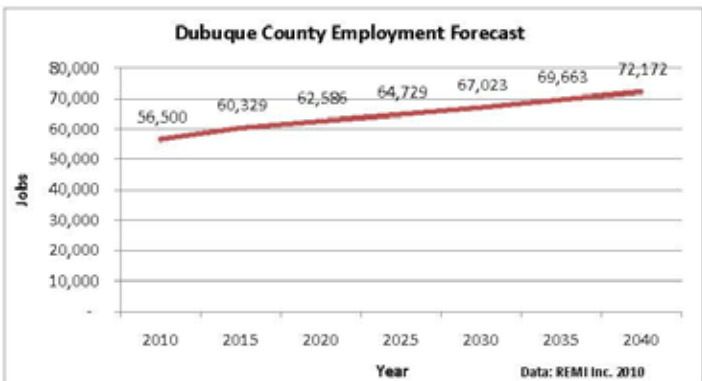
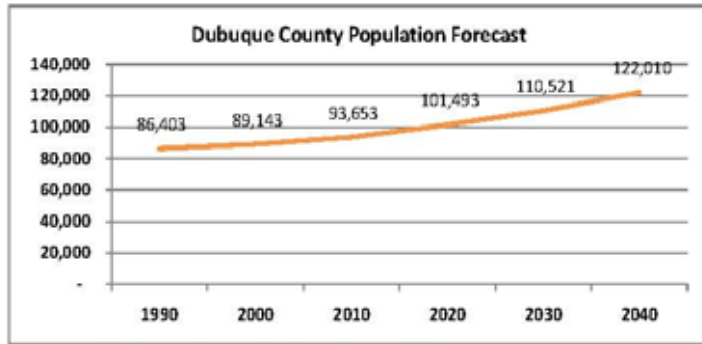
Dubuque County Region



2010 population
City: 59,000 County: 93,000
Population within 100 miles: 3 M
Population within 500 miles: 70 M

Urban: mix of residential, commercial and industrial
Rural: farmland; woodlands along Mississippi River and creeks

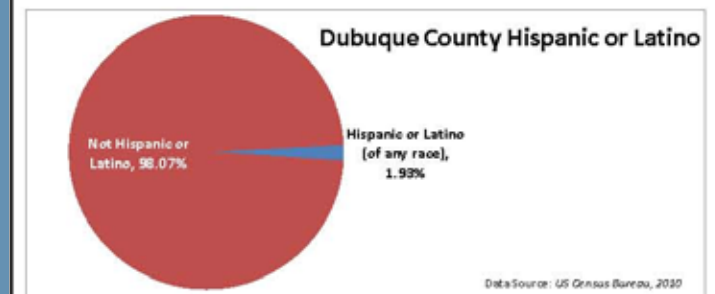
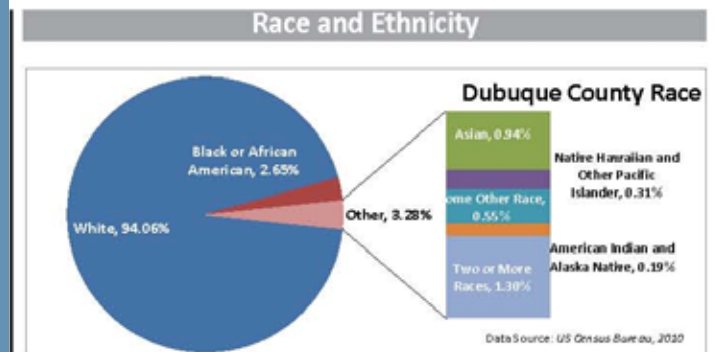
Regional Description



Growth in population and employment is forecasted to grow.

Since 2000, unemployment rate has mirrored the State rate and been below the U.S. average

Dubuque County Region



While region continues to diversify, 94% of the County population is white

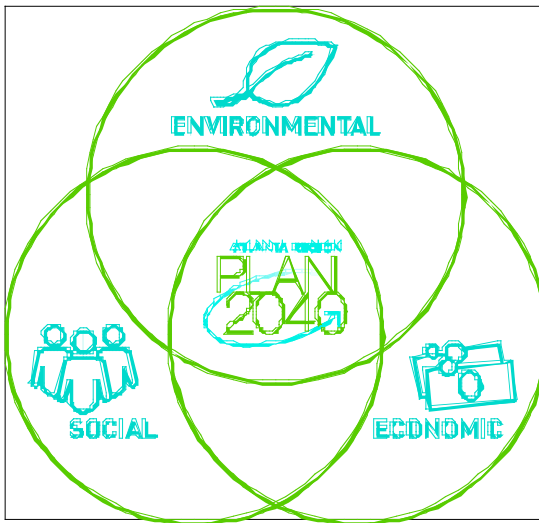
Question #2

High Impact Regional Policies-
Discuss strategies for implementing regional policies related to smart growth through partnerships and technical assistance.

Regional Policies and Programs

PLAN 2040 Vision

Assessment, Vision, Goals and Objectives



- Lead as the global gateway to the South.
- Encourage healthy communities
- Expand access to community resources.



Increase mobility options for people and goods.



Foster a healthy, educated, well trained, safe and secure population.



Promote places to live with easy access to jobs and services.



Improve energy efficiency while preserving the region's environment.

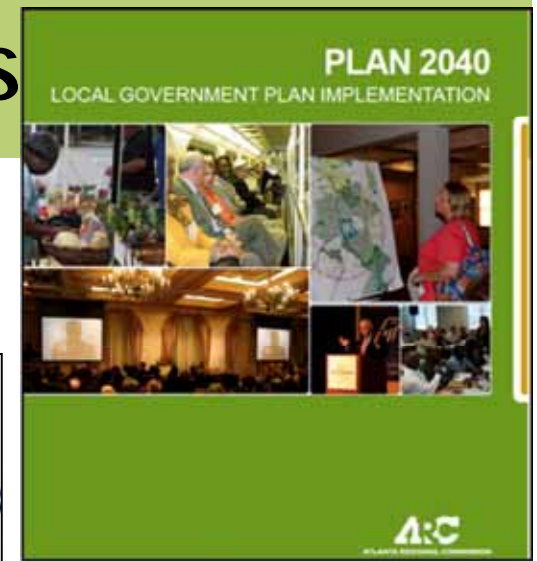


Identify innovative approaches to economic recovery and long-term prosperity.

Regional Policies and Programs

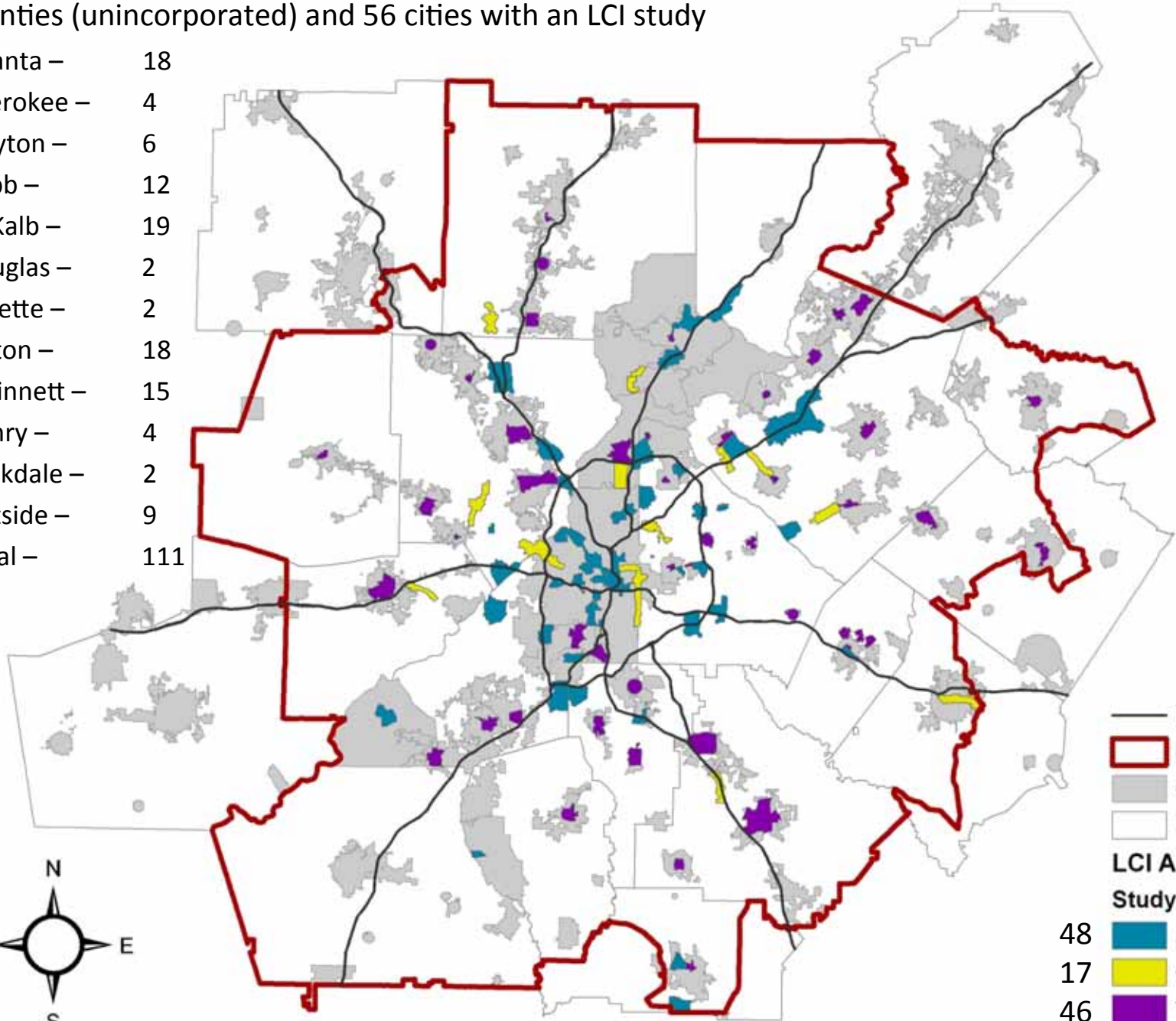
Plan 2040 Implementation

- *Livable Centers Initiative (LCI) Plans and Projects*
- *Lifelong Communities*
- *Local Government Implementation Standards*
- *Atlanta TOD Collaborative*
- Partnership Implementation
- Transportation Projects and Funding
- Aging Services
- Workforce Training - Innovation Crescent
- Metro Water District Plans - Conservation
- Community Choices Assistance
- Green Communities Program
- Data and Information



11 counties (unincorporated) and 56 cities with an LCI study

Atlanta –	18
Cherokee –	4
Clayton –	6
Cobb –	12
DeKalb –	19
Douglas –	2
Fayette –	2
Fulton –	18
Gwinnett –	15
Henry –	4
Rockdale –	2
Outside –	9
Total –	111

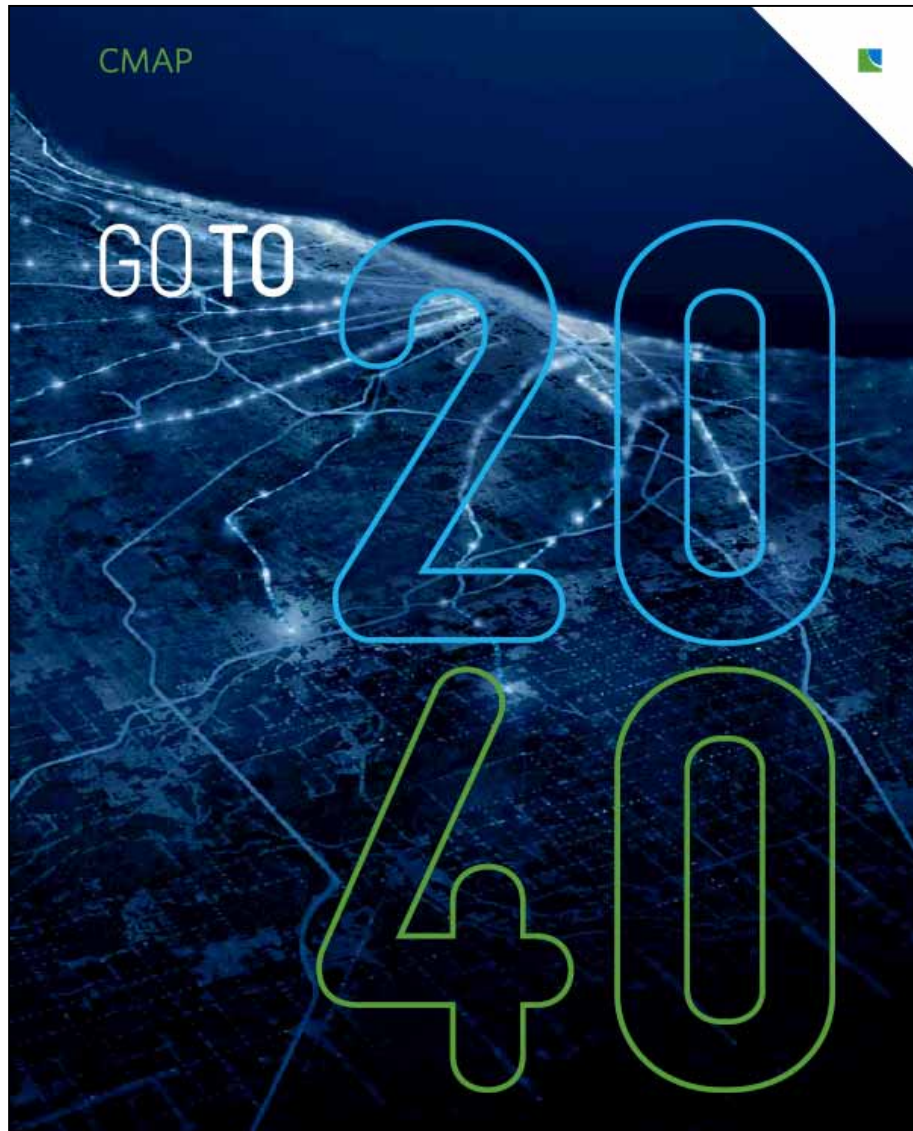


— Expressways
 [Red Outline] MPO Boundary
 [Grey] Cities
 [White] 18 Counties

LCI Areas
Study Type

48 [Blue] Activity Center
 17 [Yellow] Corridor
 46 [Purple] Town Center

Regional Policies and Programs



Recommendations

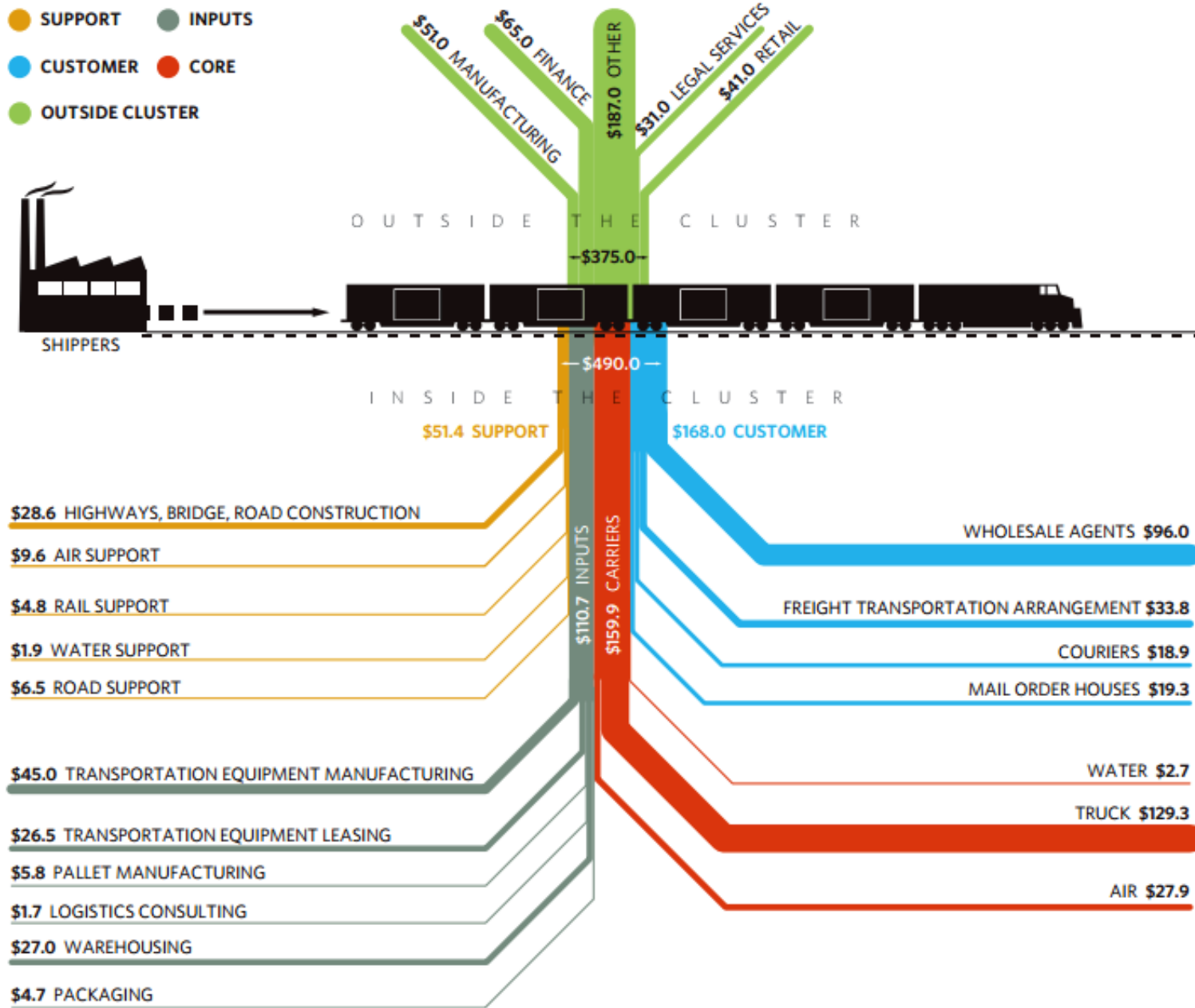
Livable Communities: land use and housing; water and energy; parks and open space; local food

Human Capital: education and workforce development; economic innovation

Efficient Governance: tax policy; access to information; coordinated investments

Regional Mobility: transportation investments; public transit; freight

Economic multiplier from \$1000 increase in rail sales



Source: CMAP Analysis of EMSI Input-Output Model, 2012.

Regional Policies and Programs



3-Year Planning Project:

Goals

Provide more transportation choices

Promote equitable, affordable housing

Enhance economic competitiveness

Support existing communities

Coordinate and leverage federal policies and investment

Value communities and neighborhoods



Regional Policies and Programs

- ✓ Diverse, Strong Economy
- ✓ Planned and Managed Growth
- ✓ Partnering for a Better Dubuque
- ✓ Improved Connectivity
Transportation & Telecommunication
- ✓ Sustainability



Regional Policies and Programs

Regional Economic Development

2007-2012 GOALS:

- 5,500 net new jobs
- \$16 per hour or an average annual income of \$33,280 for new jobs.
- \$300 million in new commercial construction projects
- Grow county population by 6% to 94,500 in 2012

Regional Policies and Programs

Regional Economic Development

STATEWIDE COMPARISON:
#1 in Iowa for **Private Sector
Job Growth**

11-12% of net new jobs in
2010 - 2012 of Iowa's Total
with **only 3%** of population

*Data Source: Iowa Workforce
Development*

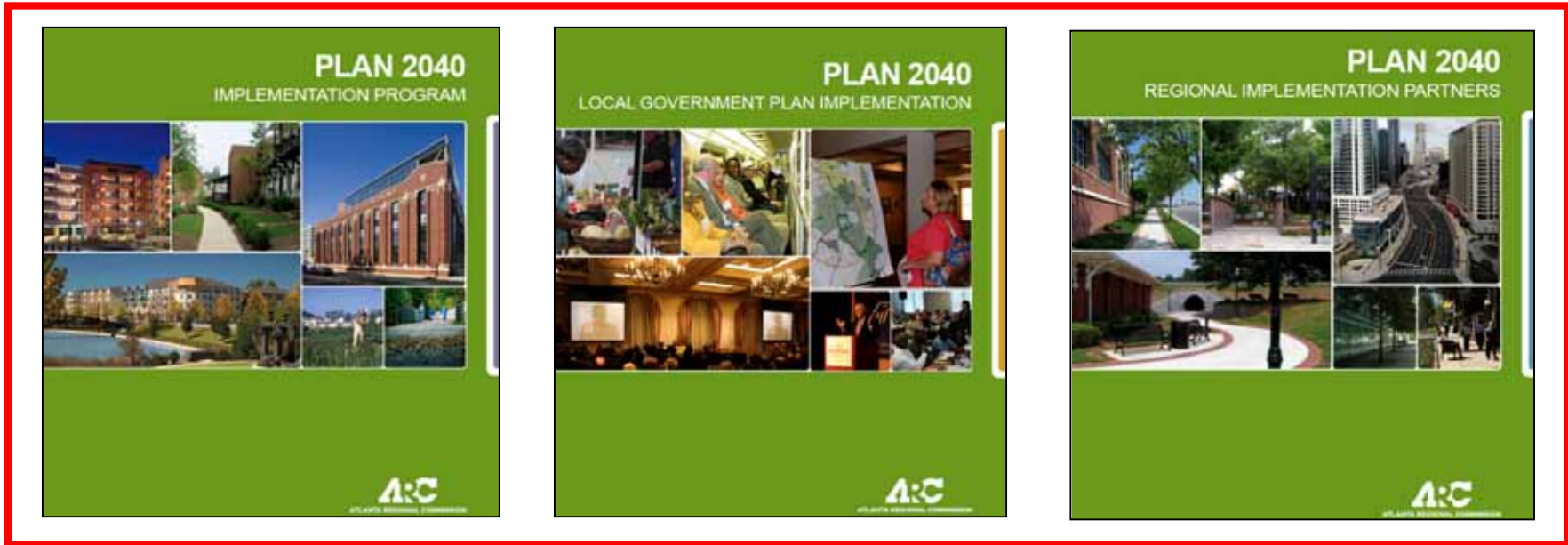
REGIONAL RESULTS:

- Average wage = \$17.57
- \$306,596,272 in commercial construction
- Population up by 4,420 since 2000

Question #3

Successful Partnerships- How did the partnerships evolve to help in implementing the region's policies and programs.

Regional Partnerships



- Coordinate and provide technical assistance to local government representatives and staff
- Engage business community- Chambers of Commerce, Atlanta Development Authority (ADA), Community Improvement Districts (CIDs), etc.
- Work with Federal, State, and Transit agencies- GDOT, FTA, Department of Community Affairs, MARTA,
- Work and support local and national non-profits- Atlanta TOD Collaborative
- Community engagement- neighborhood and citizen groups
- Developers, design professionals and academics

Regional Partnerships

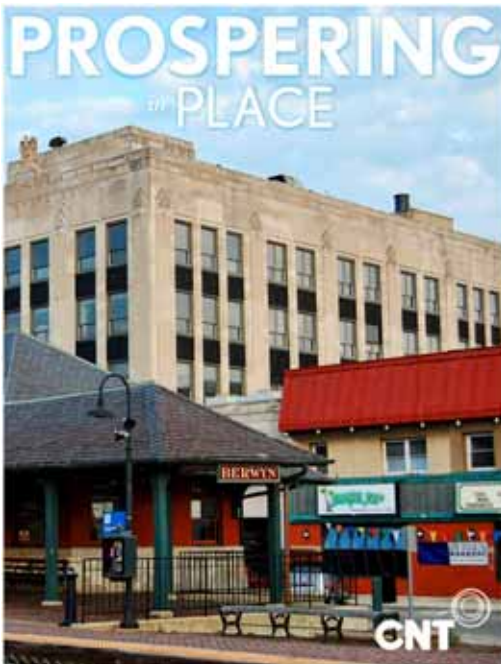


Local governments (municipalities and counties) - demonstrate relevance by providing local planning assistance

Other public agencies - coordinate programs and align priorities

Nonprofit groups - contribute to local projects, and advocate for policy priorities

Philanthropic groups - fund community groups to implement recommendations



THE
CHICAGO Home
COMMUNITY
TRUST

AND AFFILIATES

Regional Partnerships

Rural Business Opportunity Food Project



Cultivation Topics



Agriculture



Business & Industry



Culture & Creativity



Education



Energy & Utilities

Health & Human Services



Housing



Nature & the Environment

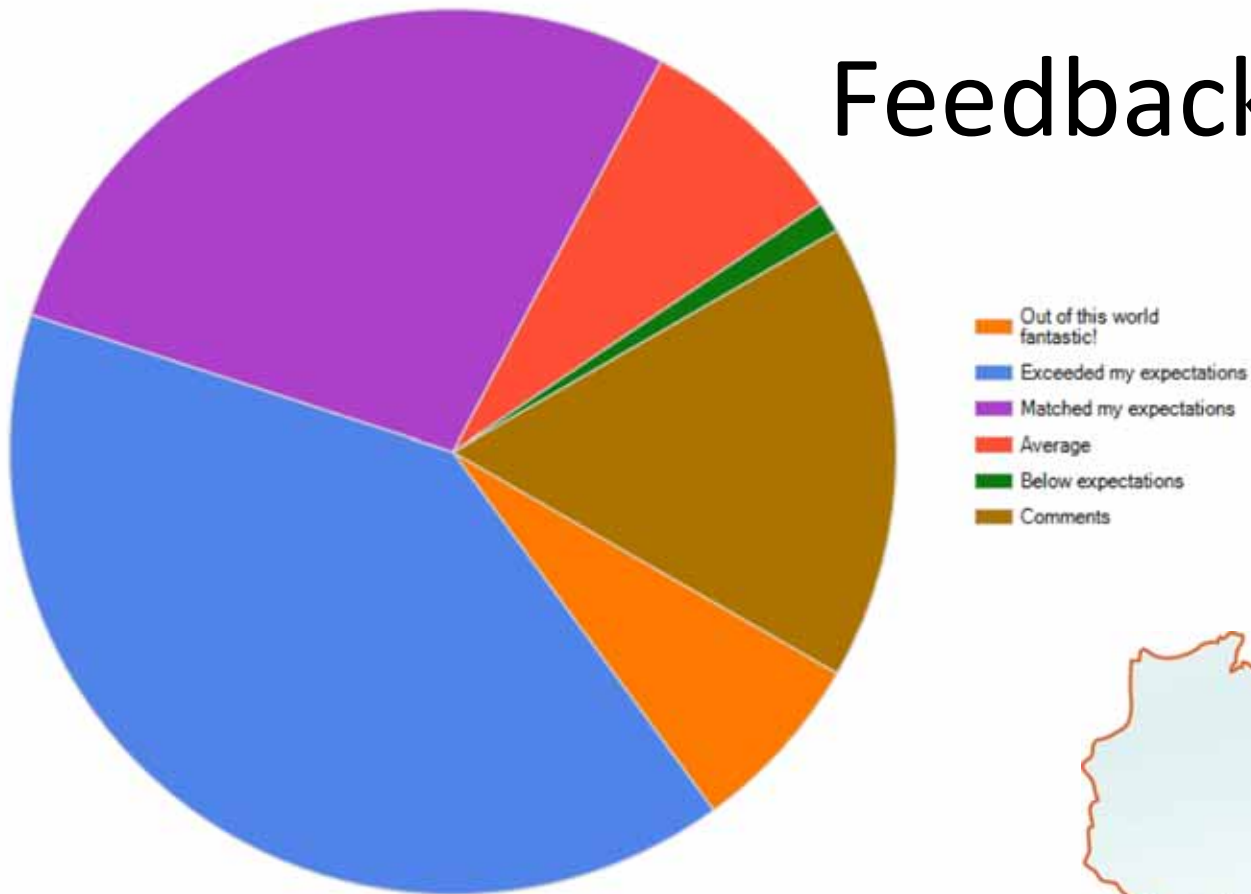


Transportation

Regional Partnerships

Overall, how would you rate your experience?

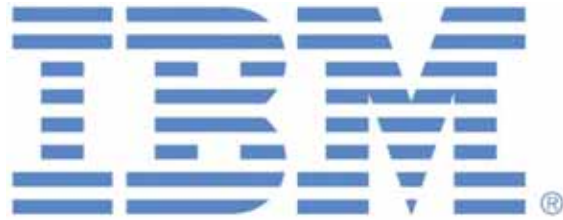
Feedback



www.growsouthwest.org



Regional Partnerships



Partnership with IBM

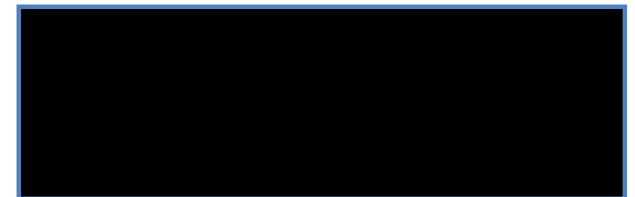
Why choose Dubuque for 1,300 jobs for a Global Technology Service Delivery Center and 1st "Smart City"?



Established Public/private partnerships

Regional Consortium of higher education institutions

Strong sustainability program in place



Thank you!

Panel Contact Information:

Dan Reuter, Atlanta Regional Commission

(404) 463-3305

dreuter@atlantaregional.com

Bob Dean, Chicago Metropolitan Agency for Planning

(312) 386-8834

bdean@cmap.illinois.gov

Lawrence Ward, Southwestern Wisconsin Regional Planning Commission

(608) 342-1713

l.ward@swwrpc.org

Roy Buol, Mayor, City of Dubuque, Iowa

(563) 564-5455

rdbuol@cityofdubuque.org